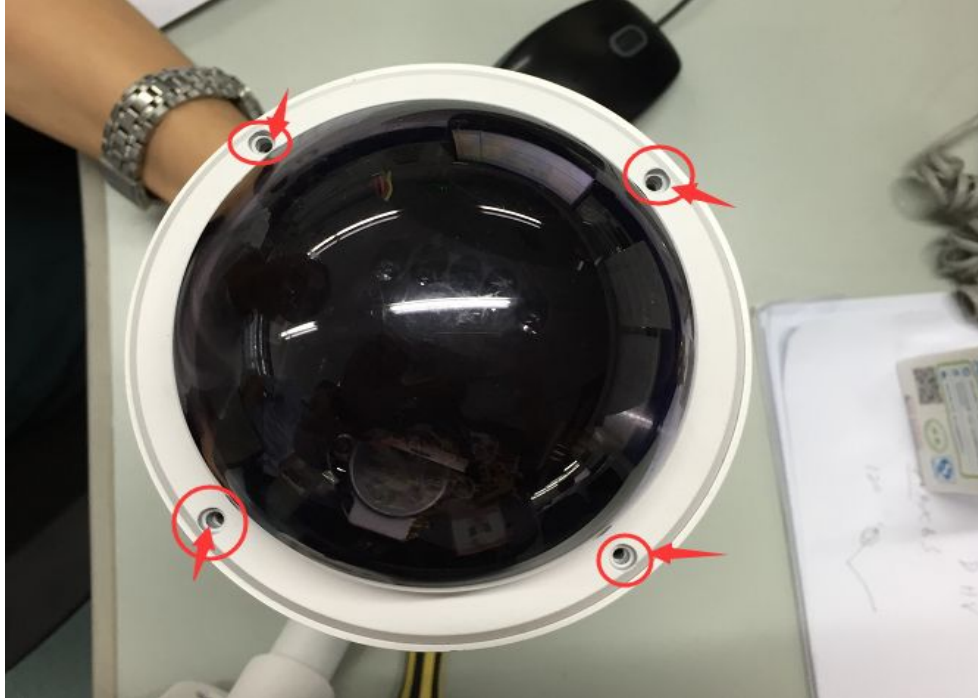
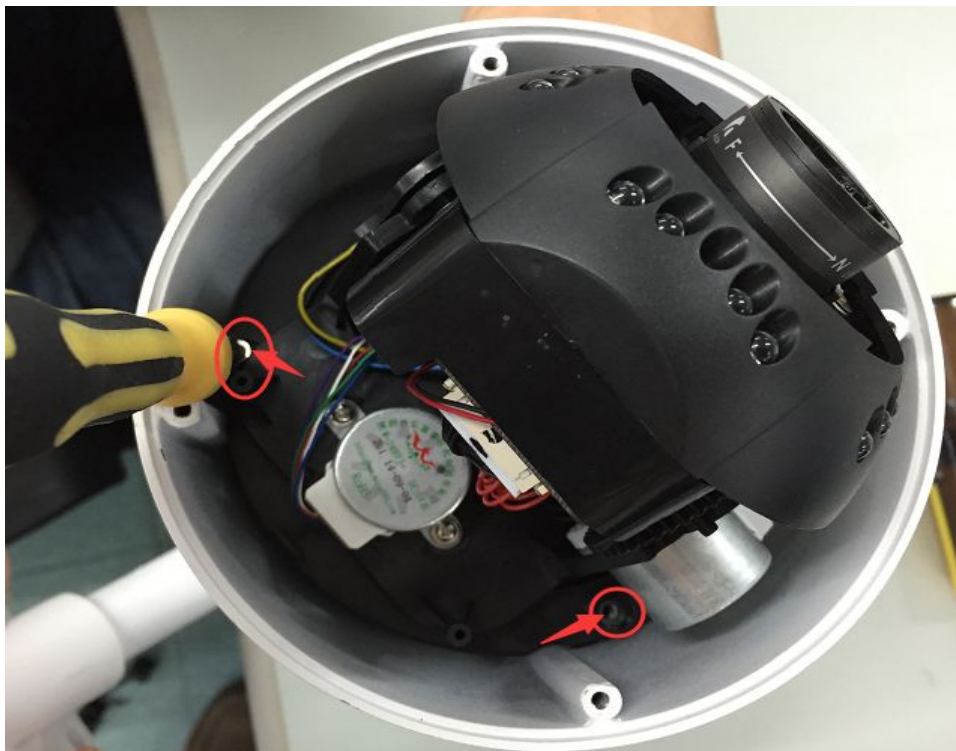


How to access the FI9828P Micro SD Card slot

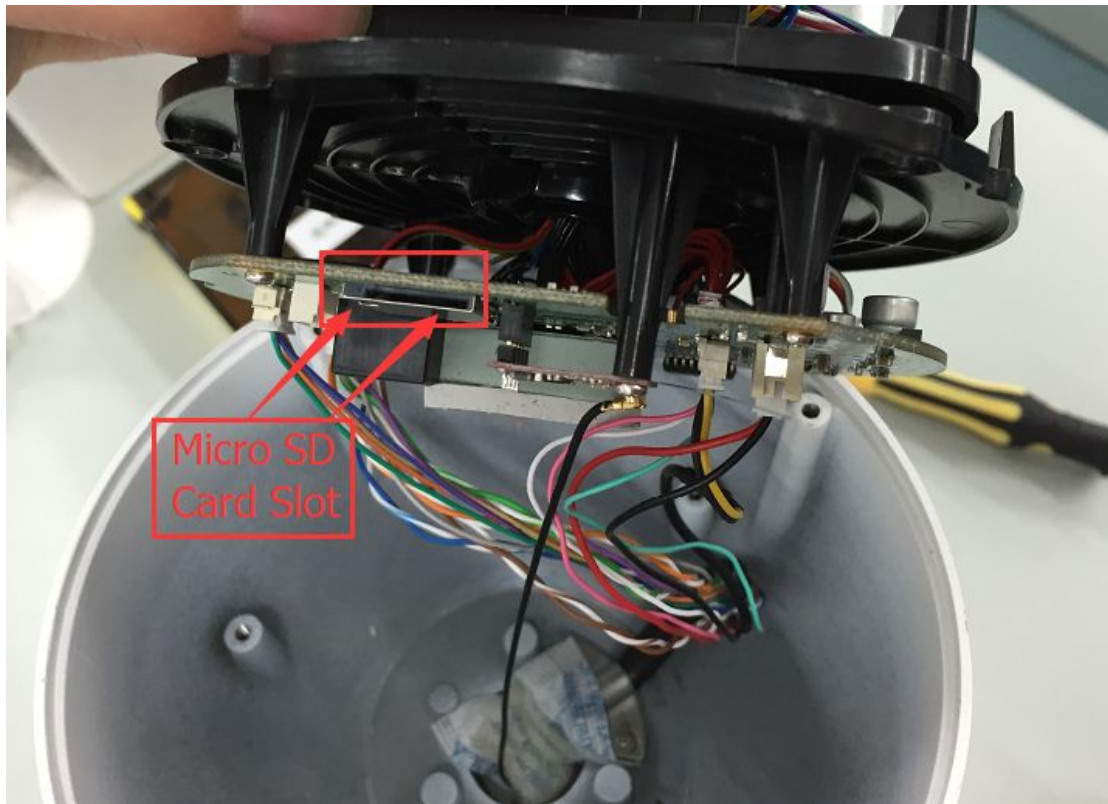
Step1: Take off the four screws on the Dome, please carefully in case to scratch the Dome.



Step2: Take off the three screws inside the camera, here are shows two screws, the other one is on the other side of lens.



Step3: After taking off the three screws, please take the Lens part away slowly in case the cable inside the camera is broken.



Note: Please make sure to screw up the camera in case of the Lens will scratch the dome when pan/tilt and the water entering when you place it outside.

End

By Technical Support Team