



Quick Installation Guide

Indoor HD IP Camera



Model: FI9821P/FI9831P



Model: FI9826P



Model: FI9815P/FI9816P

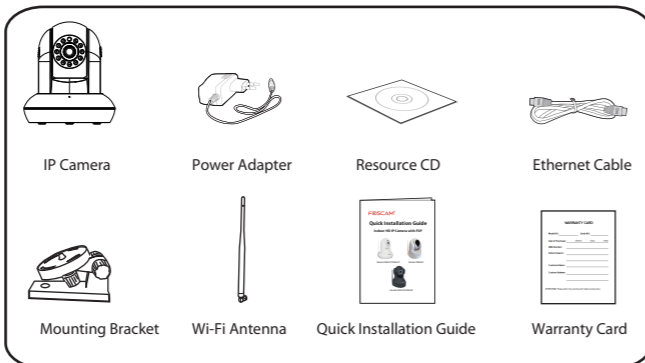


"Foscam" App download

V1.7
EQ983107

1 Installation Notice

Package Contents

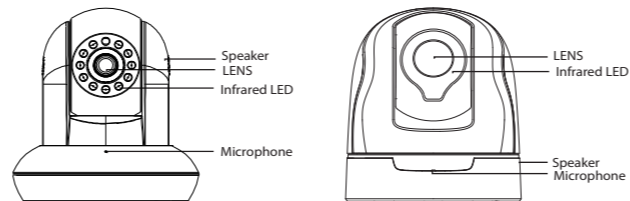


Security Warning

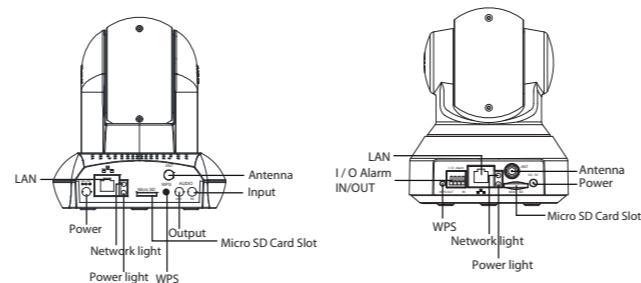
- Please change the password of your camera regularly, and use the combination of numbers, letters and special characters.
- We recommend you to update your camera to the latest firmware every three months, in order to ensure the safety of your camera and have a better product experience.
- Please keep the username and password of your camera safe, and do not tell them to others.

2 Physical Description

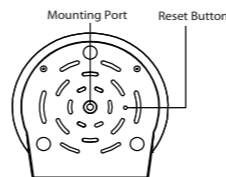
Front panel



Rear panel



Bottom view



3 Download APP

To install the Foscam APP on your smartphone, you can choose either of the following methods:

Scan QR code

If you have a QR Code APP on your smartphone, scan the code below.



Foscam

Download from APP

You can search the term "Foscam" directly on the APP Store or Google Play Store. Then find the APP that appears with the same icon as shown above, and install it to your smartphone.

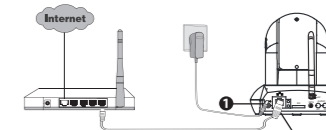
Before you continue, please note:

- Make sure your wireless router is enabled DHCP, and connected to internet.
- Make sure your smartphone is connected to your wireless router and located near the camera.

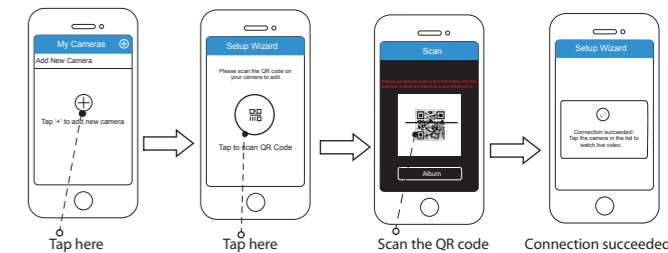
4 Add IP Camera

There are two ways, wired and wireless connection, for you to add IP camera via Foscam APP. You can choose either of them:

4.1 Wired Connection



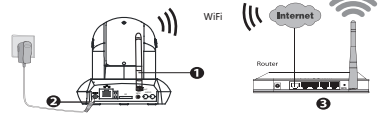
1. Connect the camera with power adapter, and wait for a moment. Then the camera will play a sound "Hello, Foscam".
2. Connect your camera with router by Ethernet cable, then the camera will play a sound "Wired connection succeed".
3. Make sure your smartphone is connected to your wireless router.
4. Run the Foscam APP on your smartphone, register a Foscam Cloud account then log in. Please follow steps below to add your camera.



Note:

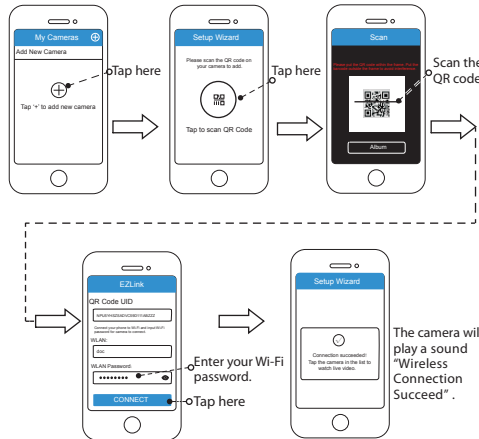
If you have added your IP camera successfully by wired connection, please do not add it again by wireless connection.

4.2 Wireless Connection



Note: Do not connect the camera with router via Ethernet cable.

1. Connect the camera with power adapter, and wait for a moment. Then the camera will play a sound "Hello, Foscam".
2. Install the wireless antenna and make it upright, the camera will play a sound "Ready for WiFi configuration".
3. Make sure your smartphone is connected to your wireless router.
4. Run the Foscam APP on your smartphone, register a Foscam Cloud account then log in. Please follow steps below to add your camera.



Note:

If you fail to add your camera to smartphone several times, press the "Reset" button on the camera to reset it, then try again.

5 Access the IP Camera

Once succeeding in connecting your camera, you can access it via three different ways (Foscam cloud website, APP on smartphone, Web UI).

Foscam Cloud Service



You can access camera via Foscam cloud website: www.myfoscam.com.

You can enjoy good experience on this website as below.

- It's quite easy to access and manage all your IP cameras.
- You can enjoy the latest feature firstly on the website. For example you can use cloud storage, share your video, etc.

If you have already registered an account on Foscam APP, you can use this account to log in and access the IP camera directly via browser.

Foscam APP



You can use Foscam APP to view the video on your camera anytime, anywhere.

Note:

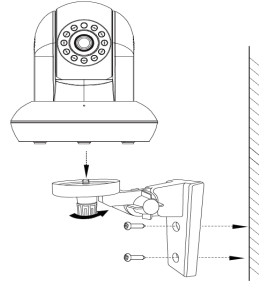
You can experience new features, including EZLink, Online-Update, Message Push, etc., ONLY on "Foscam" APP. Any other third-party APP, other than "Foscam", can't support all these new features.

Web UI



If you want to manage your camera more professionally, we suggest you to access your camera via browser. You can download the "Equipment Search Tool" from <http://www.foscam.com> to your computer, then access the camera directly via the search tool.

6 Hardware Installation



1. Screw the mount on the wall with the two screws provided.
2. Loosen the thumb screws to adjust the mount to the desired position. Once the position is set, tighten the screws securely.

7 Important Notice

Camera Username / Password

The camera username / password are used to access and manage your camera on computer. They can improve the security of your camera significantly. If you have forgotten either of them, you need to press and hold the "Reset" button on the camera powered on. After hearing the voice prompt, release the button. The camera will automatically reboot and the default settings will be restored. Then the default username / password become admin / (blank).

After restoring to the factory default settings, you need to delete the camera from Foscam APP, and then add it again.

Foscam cloud service Account / Password

Foscam cloud service account / password is used to access Foscam APP or Foscam cloud service website, you can register the account / password on one of them.

Storage Media

Support cloud storage, NVR(Network Video Recorder), Micro SD card. If you hope to store the video for a whole day, it is suggested to use the Foscam NVR.

Firmware Upgrade

You can upgrade the firmware on Foscam APP with new feature "One-key Online Upgrade"(Enter Foscam APP, select "Settings > Firmware Upgrade").

You also can download the latest version to upgrade your camera from office website <http://www.foscam.com> (Access the website, select "Support > Firmware Downloads").

Safety Tips

- Please check the power adapter before using the camera.
- Please fix the camera and brackets with the provided locating screws to avoid falling down.
- To avoid the risk of fire or electric shock, please keep your camera in dry and cool place, do not let the camera be affected with damp.
- Camera is electronic equipment, please keep it away from children.
- Change your default port to a greater range to avoid hackers' invasion.
- Check the logs of your Foscam cameras often. Foscam Cameras have embedded logs reminding you which IP addresses are accessing the camera.

8 Technical Support

If you have any problems with your Foscam IP Camera, please contact the Foscam reseller you purchased from. If your problem still can't be solved, please send your e-mail to the technical support team of Foscam headquarter at tech@foscam.com.

Your valuable comments and suggestions on improving Foscam products are welcomed!

FOSCAM[®]



CE Certificate Website:

<http://www.foscam.com/company/ce-certificate.html>

ShenZhen Foscam Intelligent Technology Co., Ltd

www.foscam.com