

How to upgrade firmware for Indoor PT camera

Suitable for MJPG camera: FI8910W, FI8910E, FI8916W, FI8918W, FI8918E.

Attention: After upgrading to this version, it cannot downgrade to previous versions.

Note:

Please check the model number before upgrading.

The firmware 11.37.2.xx cannot upgrade to this version.

The firmware 11.22.2.xx can upgrade to this version.

Updating with the wrong firmware could severely damage and/or break your camera. Please make sure the firmware is correct and update at your own risk.

Preparation for upgrading:

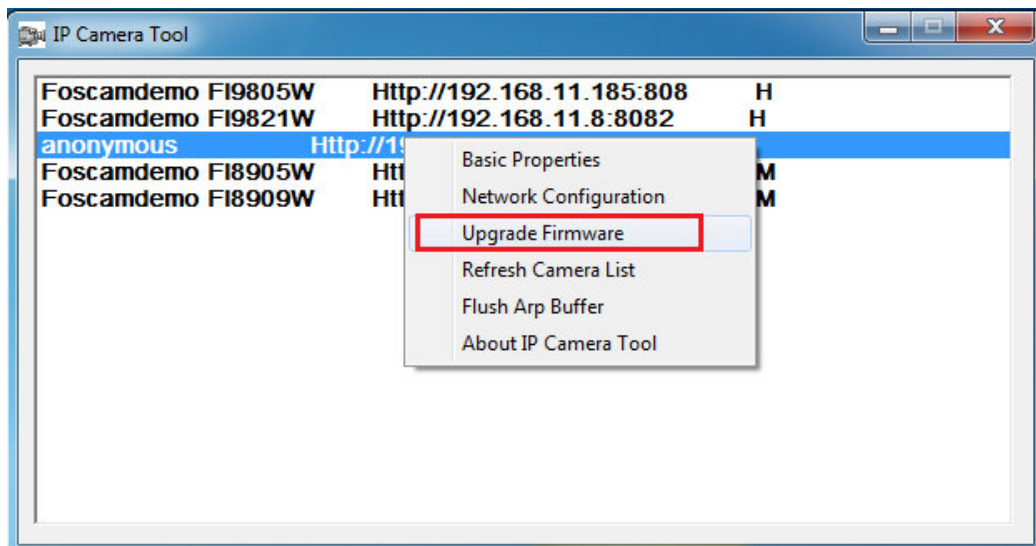
- 1) Plug in the Ethernet cable to upgrade firmware, not via wireless.
- 2) Upgrade the system firmware firstly and web UI secondly.
- 3) Keep power on during the upgrading.

Download firmware from <http://www.foscam.com/help.aspx?TypeID=11> .

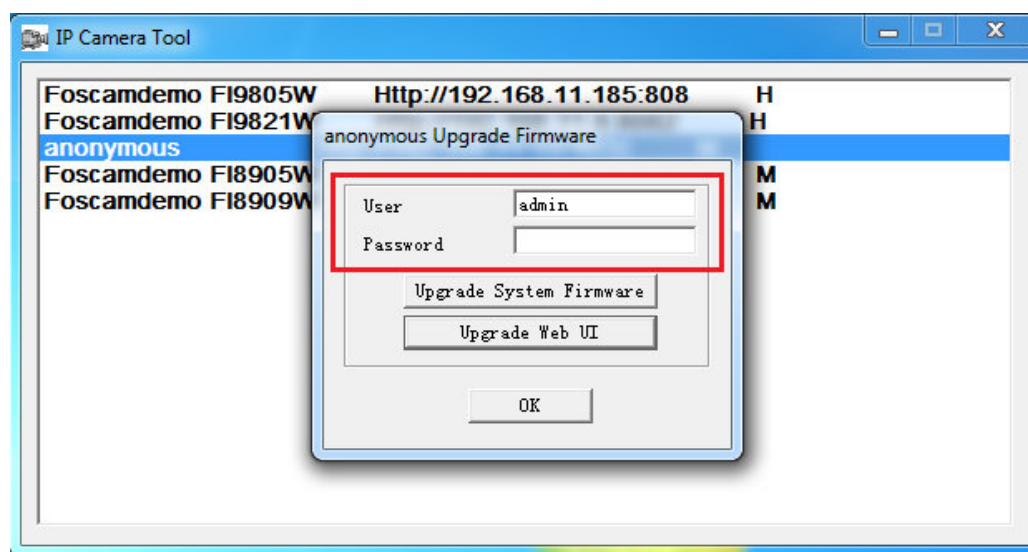
(Need to register first.)

Method 1: Upgrade firmware on IP Camera Tool

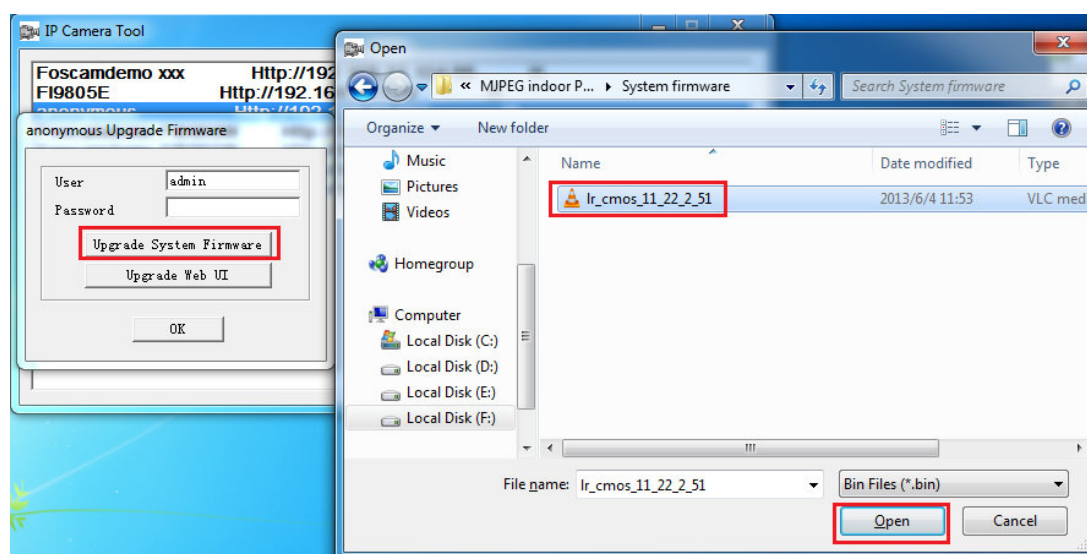
Step 1: Highlight and right click the camera and then go to **Upgrade Firmware**.

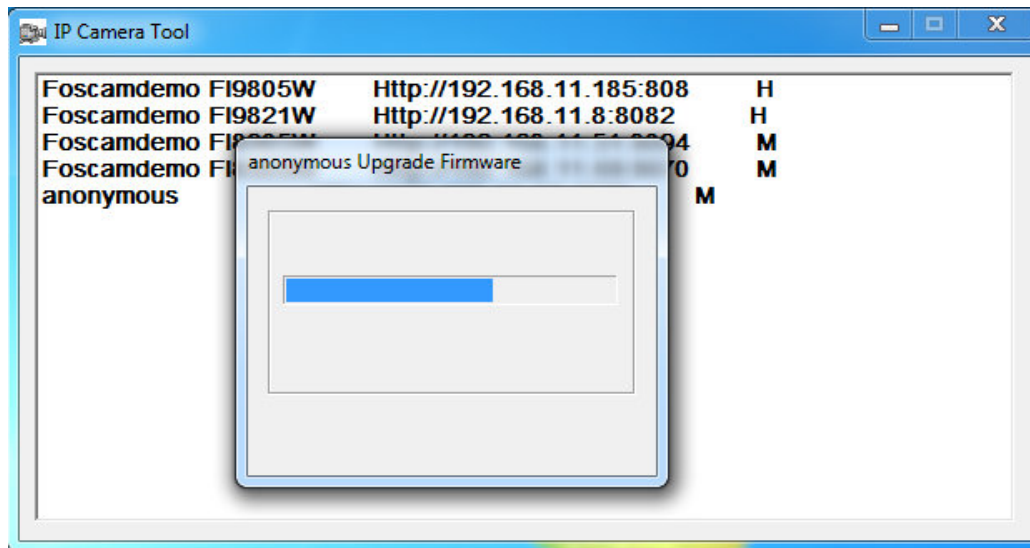


Step 2: Enter the user and password of camera. The default user is 'admin' and password is blank.

**Step 3:** Update System Firmware.

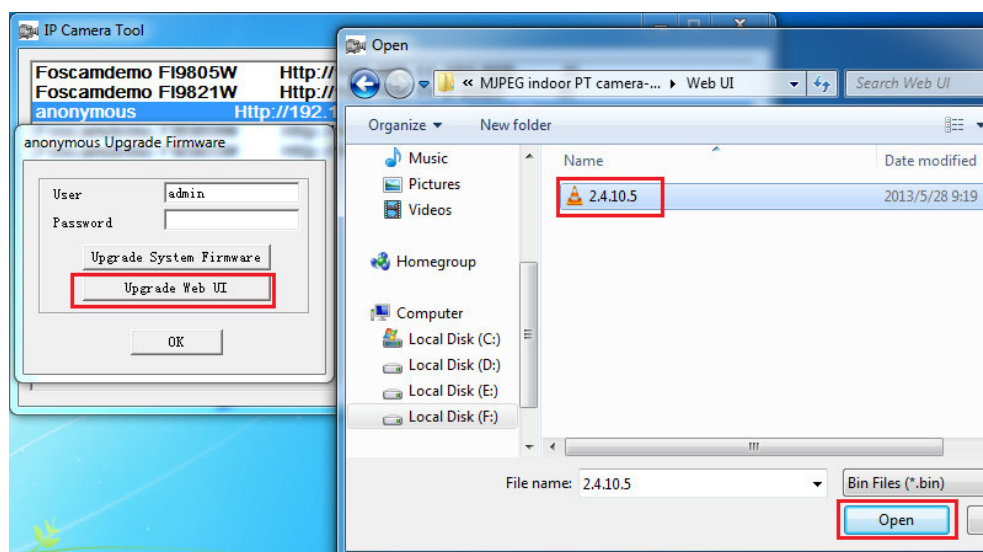
Click **Upgrade System Firmware** → select system firmware → click **Open**.
After reboot, the system firmware is loaded successfully.





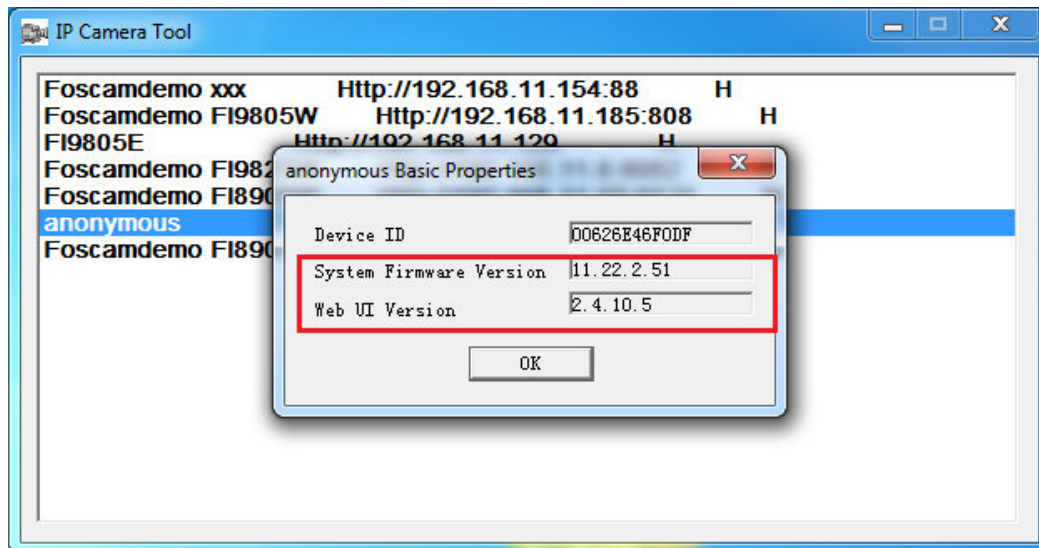
Step 4: Upgrade Web UI.

Repeat step and 2. Click **Upgrade WEB UI** → select Web UI firmware → click **Open**. After reboot, the Web UI is loaded successfully.



Step 5: You can check new firmware on **Basic Properties**.

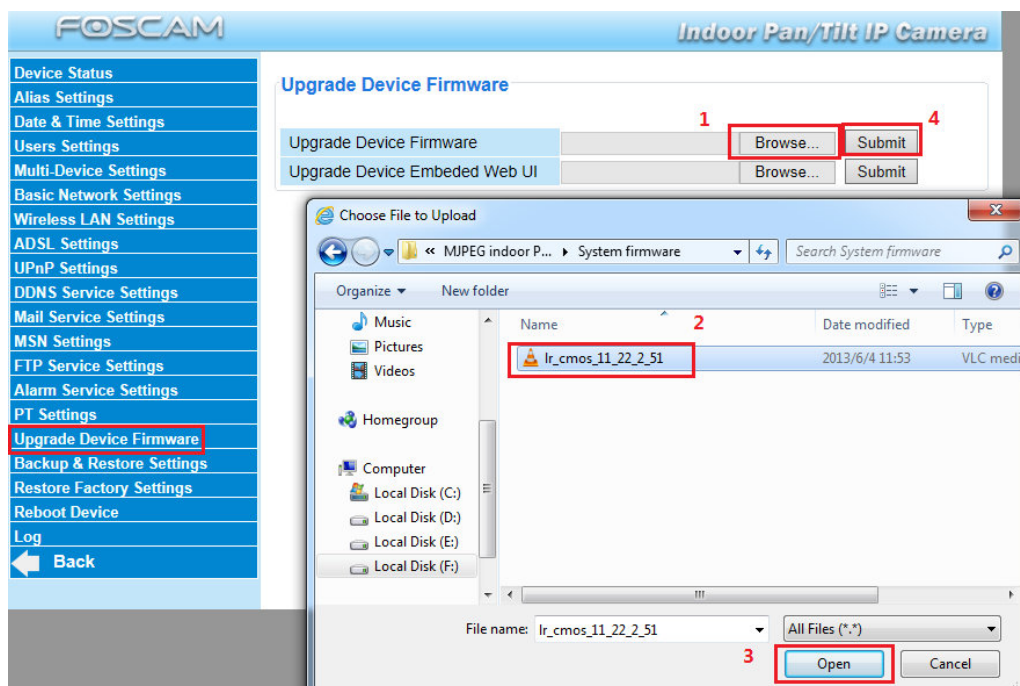
Highlight and right click the camera and then go to **Basic Properties**.



Method 2: Update firmware on **Upgrade Device Firmware**.

Step 1: Log into camera, click **Device Management** → **Upgrade Device Firmware**.

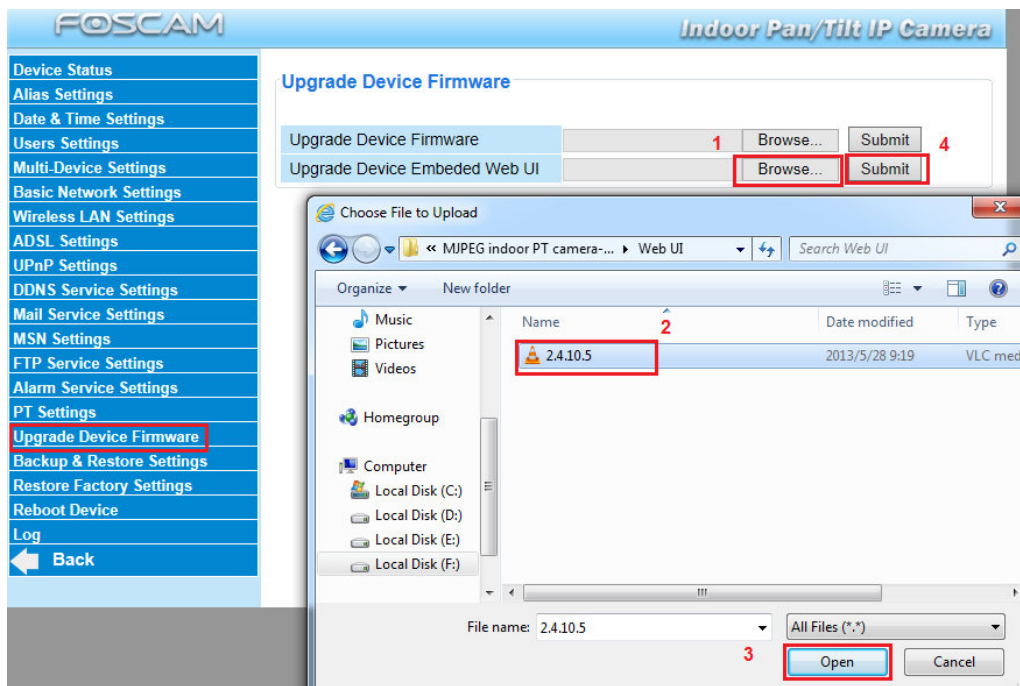
Step 2: Update System firmware. Click **Browse** → select system firmware → click **Open** → click **Submit**. After reboot, the system firmware is loaded successfully.



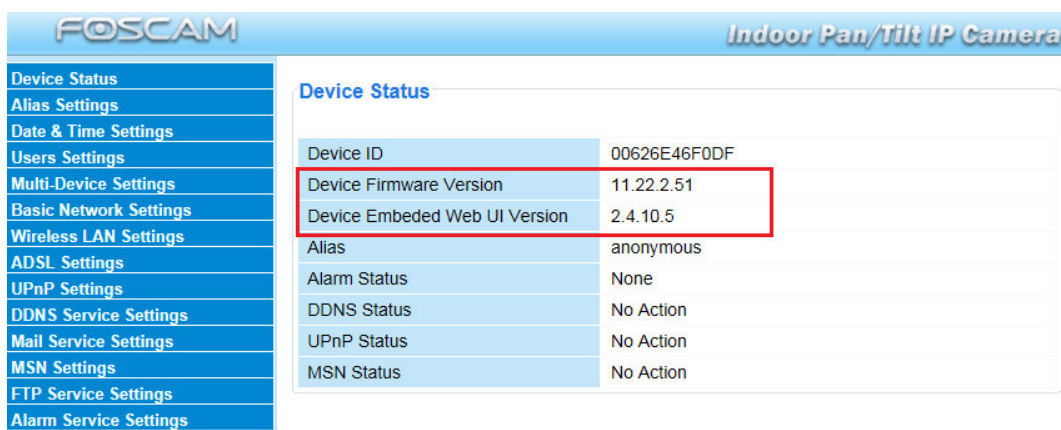
Step 3: Update Web UI firmware.

Click **Browse** → select Web UI firmware → click **Open** → click **Submit**.

After reboot, the Web UI is loaded successfully.



Step 4: You can check new firmware on **Device Status** page.



End

Edit by Technical Support Team

