

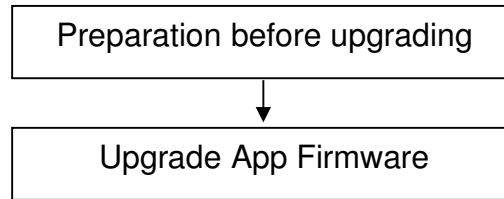
Upgrade Guidance for FI9821P

This firmware is for camera FI9821P, you can check camera model on the bottom sticker. Updating with the wrong firmware could severely damage and/or break your camera. Please make sure the firmware is correct.

Note:

1. System firmware 1.4.1.8, App firmware 1.11.1.21 **can** upgrade to this version;
2. If you are having the 1.11.1.16/18/19/20 app firmware versions, please upgrade to 1.11.1.**21** first, (which can be downloaded from <http://www.foscam.com/down3.aspx>.)

Upgrading procedure:



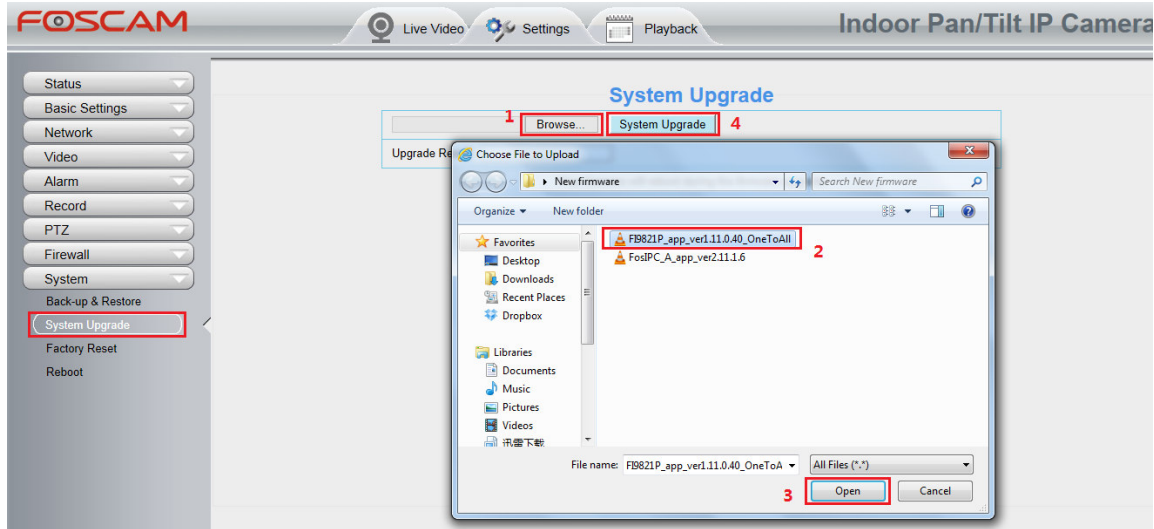
Preparation before upgrading:

1. Please restart your camera before the upgrading;
2. Connect camera to router with an Ethernet cable before upgrading;
3. DO NOT upgrade firmware via wireless;
4. DO NOT upgrade firmware over internet, just finish it in LAN;
5. Keep power on during the upgrading;
6. Unplug the SD card before upgrading;
7. Logging your camera as administrator first, upgrade firmware on web page.

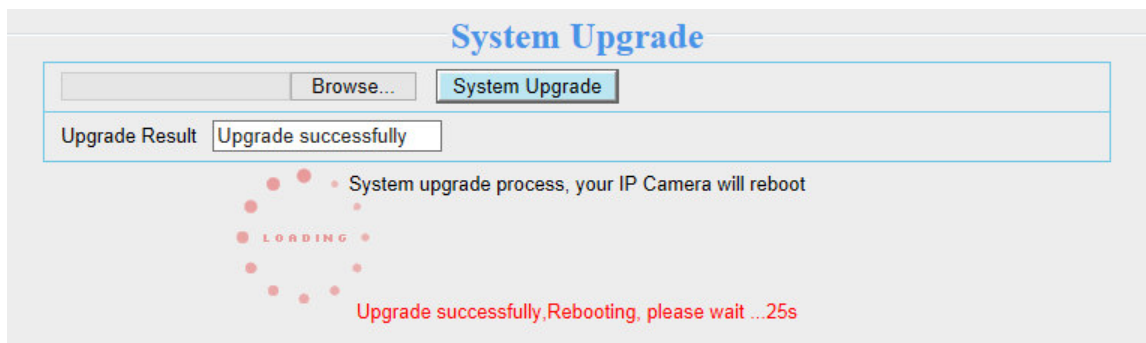
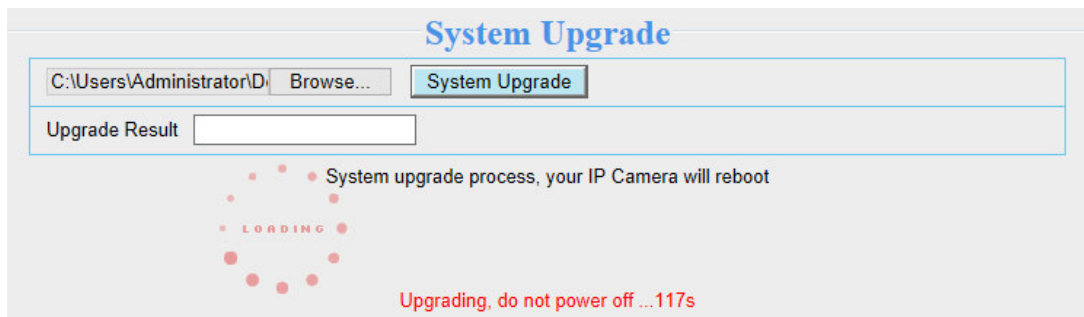
Operation 1: Upgrade the transitional app firmware version.

Step 1: Go to **Settings** → **System** → **System Upgrade**.

Click **Browse** → choose **FI9821P_app_ver1.11.0.40_OneToAll.bin** → click **Open** → Click **System Upgrade**.

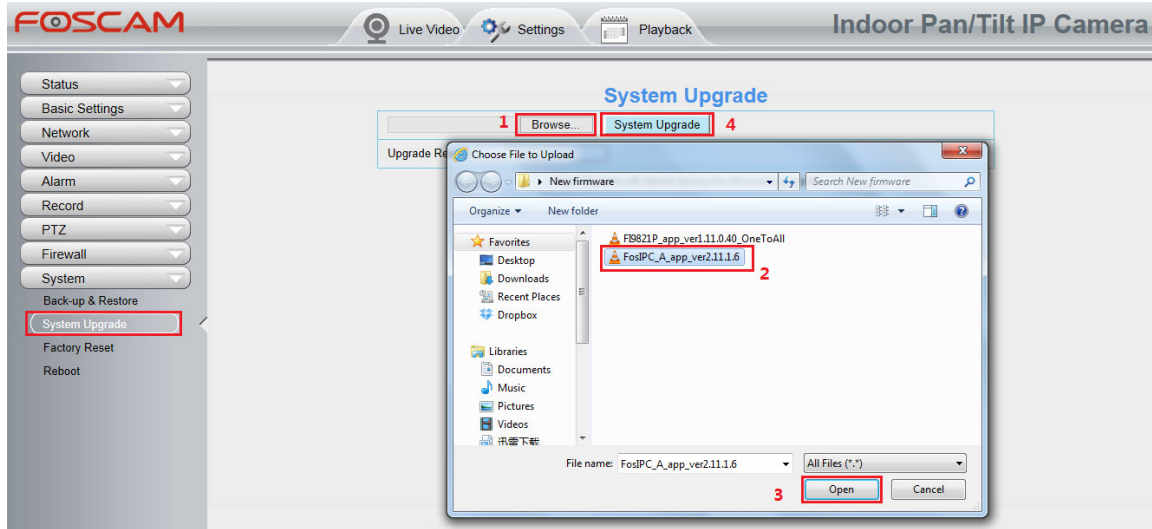


Step 2: “Upgrading, do not power off ... Xs” pop up, camera IP will disappear from the IP Camera Tool. Then camera will reboot itself, **DO NOT** power off the camera, please wait till the camera IP reappear in the IP Camera Tool.

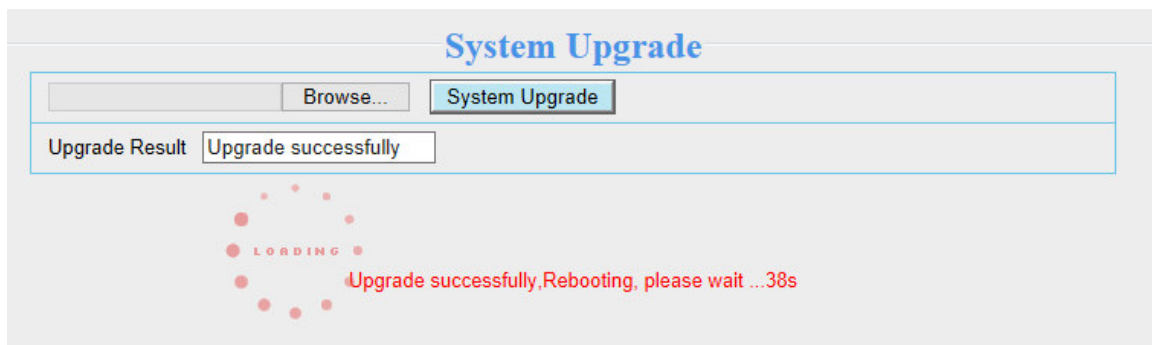
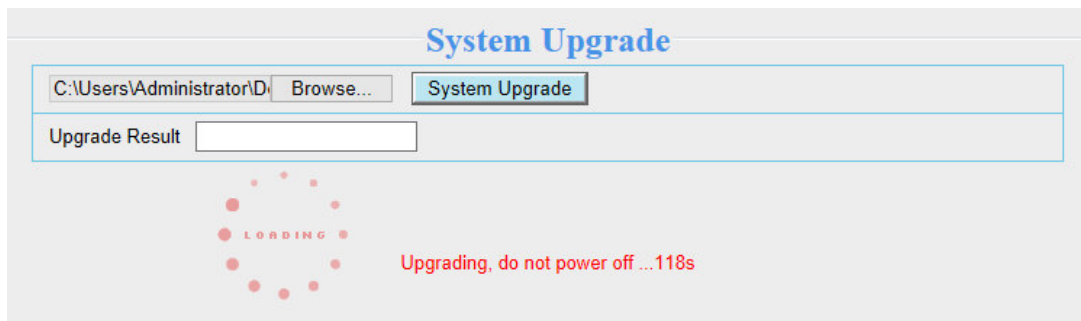


Operation 2: Upgrade the final app firmware version.

Step 1: Login again, go to **Settings → System → System Upgrade**. Click **Browse** → choose **FosIPC_A_app_ver2.11.1.6.bin** → click **Open** → Click **System Upgrade**.



Step 2: “Upgrading, do not power off ... Xs” pop up, camera IP will disappear from the IP Camera Tool. Then camera will reboot itself, **DO NOT** power off the camera, please wait till the camera IP reappear in the IP Camera Tool.



Operation 3: Login again to check the **System Firmware Version**, **Application Firmware Version** and **Plug-In Version**.

Device Information	
 Refresh	
Camera Model	FI9821P
Camera Name	FI9821P
Camera ID	00626E4D8A49
Camera Time	2014/02/12 17:08:36
System Firmware Version	1.4.1.8
Application Firmware Version	2.11.1.6
Plug-In Version	2.0.2.10

Congratulations, your camera successfully upgraded to the latest firmware!

Note:

1. You'd better re-install the plug-in, in case it did not upgraded.
2. The correct firmware version after upgrade:

System Firmware Version	1.4.1.8
Application Firmware Version	2.11.1.6
Plug-In Version	2.0.2.10

End

--- by Foscam Technical Support Team