

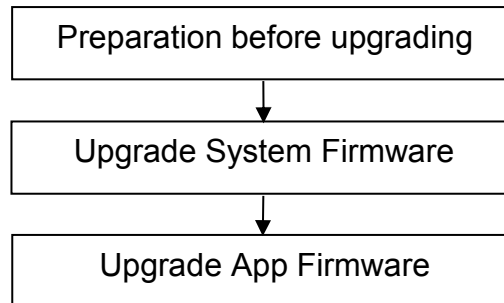
## Upgrade Guidance for FI9805E

This firmware is for camera FI9805E, you can check camera model on the rear sticker. Updating with the wrong firmware could severely damage and/or break your camera. Please make sure the firmware is correct.

**Note:**

1. System firmware 1.4.1.8, App firmware 2.14.1.5 **can** upgrade to this version;
2. If you are not having the above firmware versions, please upgrade to **1.4.1.8/2.14.1.5** first, which can be download from <http://www.foscam.com/down3.aspx>.

Upgrading procedure:

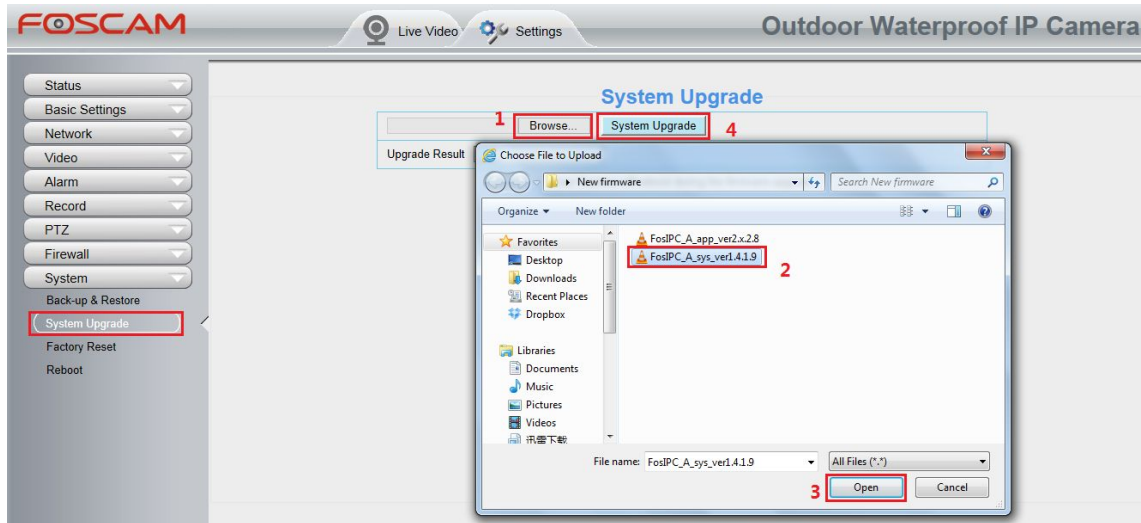


**Preparation before upgrading.**

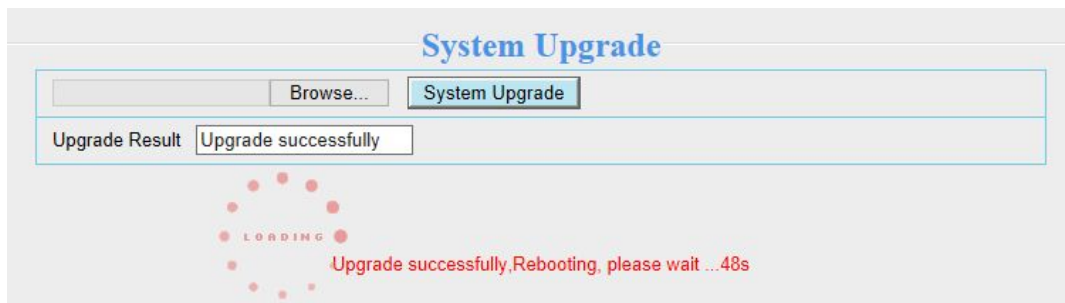
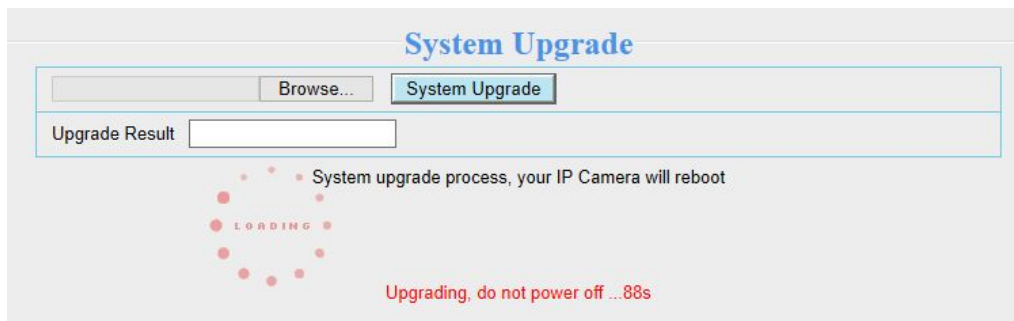
1. Please restart your camera before the upgrading;
2. Connect camera to router with an Ethernet cable before upgrading;
3. DO NOT upgrade firmware over internet, just finish it in LAN;
4. Keep power on during the upgrading;
5. Logging your camera as administrator first, upgrade firmware on web page.

**Operation 1:** Upgrade the system firmware version.

**Step 1:** Login your camera, go to **Settings → System → System Upgrade**. Click **Browse** → choose **FosIPC\_A\_sys\_ver1.4.1.9.bin** → click **Open** → Click **System Upgrade**.

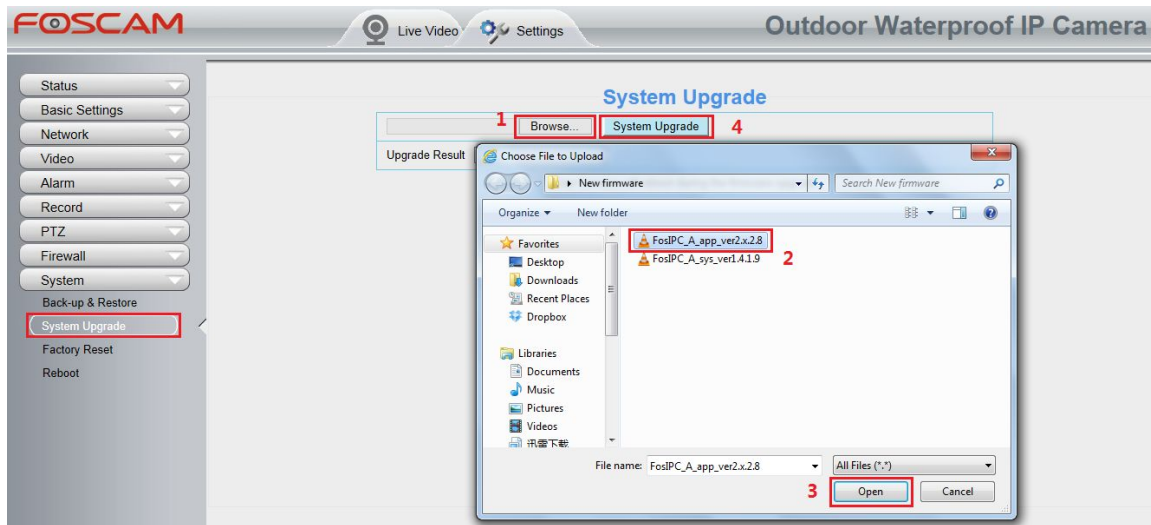


**Step 2: “Upgrading, do not power off ... Xs”** pop up, camera IP will disappear from the IP Camera Tool. **Then camera will reboot itself, DO NOT power off the camera, please wait till the camera IP reappear in the IP Camera Tool.**

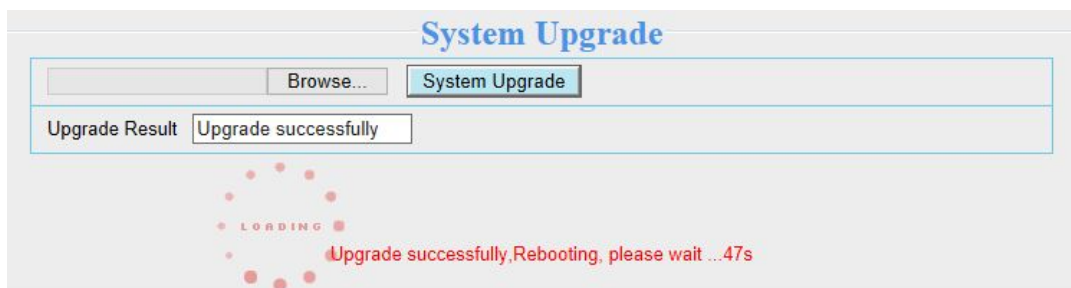
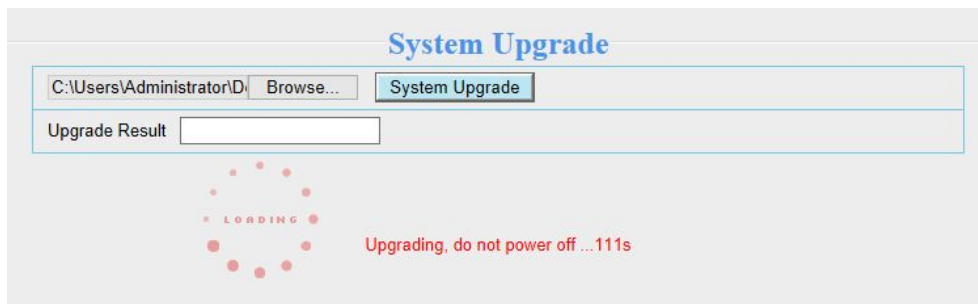


**Operation 2:** Upgrade the app firmware version.

**Step 1:** Login again, go to **Settings → System → System Upgrade**. Click **Browse** → choose **FosIPC\_A\_app\_ver2.x.2.8.bin** → click **Open** → Click **System Upgrade**.



**Step 2: “Upgrading, do not power off ... Xs”** pop up, camera IP will disappear from the IP Camera Tool. **Then camera will reboot itself, DO NOT power off the camera, please wait till the camera IP reappear in the IP Camera Tool.**



**Operation 3:** Login again to check the **System Firmware Version**, **Application Firmware Version** and **Plug-In Version**.

Device Information	
 Refresh	
Camera Model	FI9805E
Camera Name	FI9805E
Camera ID	00626E47124B
Camera Time	2014/04/14 06:47:19
System Firmware Version	1.4.1.9
Application Firmware Version	2.14.2.8
Plug-In Version	2.0.2.10

**Congratulations**, your camera successfully upgraded to the latest firmware!

**Note:**

1. You'd better re-install the plug-in, in case it did not upgraded.
2. The correct firmware version after upgrade:

System Firmware Version	1.4.1.9
Application Firmware Version	2.14.2.8
Plug-In Version	2.0.2.10