

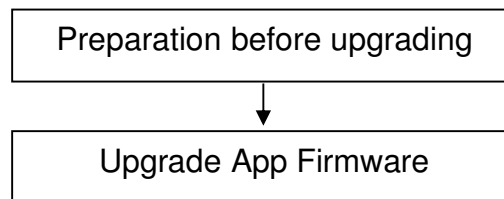
## Upgrade Guidance for FI9805E

This firmware is for camera FI9805E, you can check camera model on the rear sticker. Updating with the wrong firmware could severely damage and/or break your camera. Please make sure the firmware is correct.

**Note:**

1. System firmware 1.4.1.8, App firmware 1.14.1.18 **can** upgrade to this version;
2. If you are having the 1.14.1.15 app firmware versions, please upgrade to 1.14.1.**18** first, which can be download from <http://www.foscam.com/down3.aspx>.
3. After upgrade to this version, it cannot downgrade to previous ones.

Upgrading procedure:

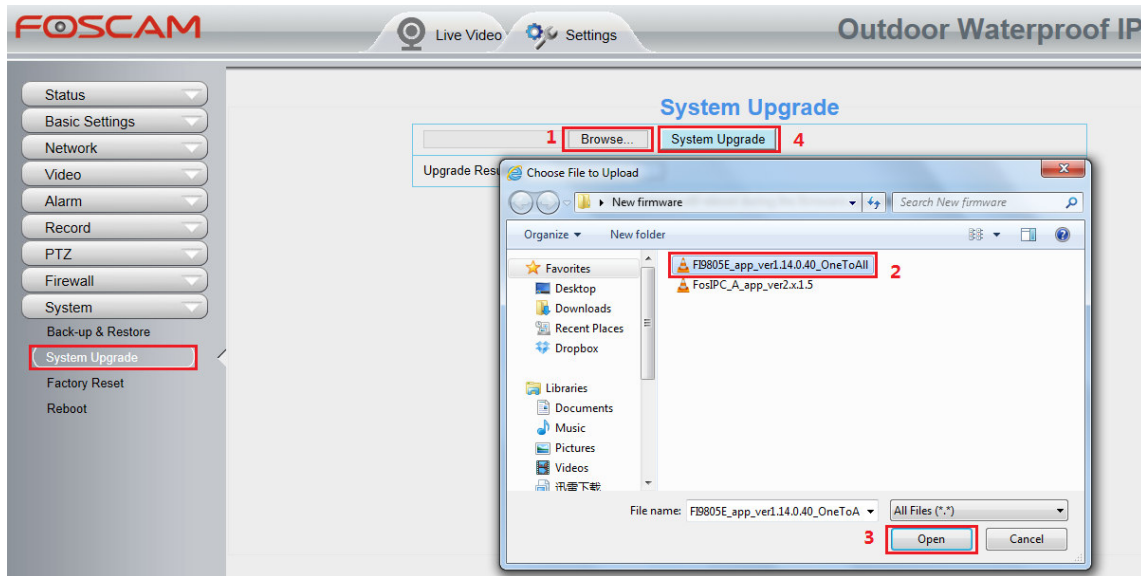


**Preparation before upgrading.**

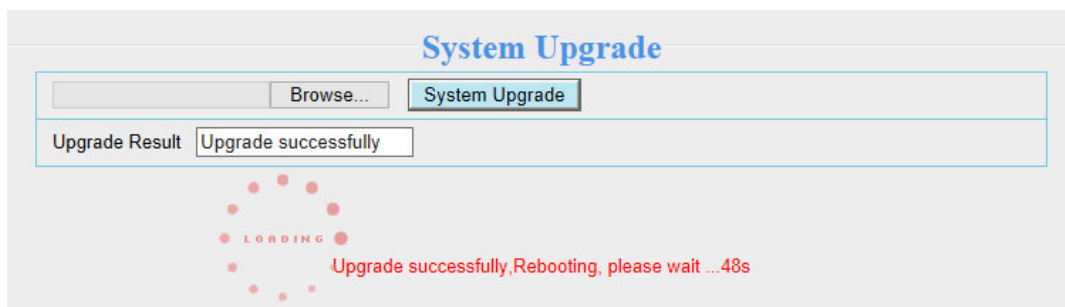
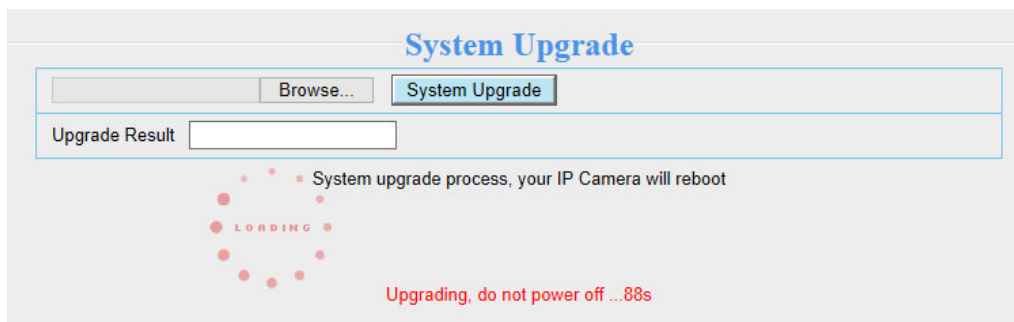
1. Please restart your camera before the upgrading;
2. Connect camera to router with an Ethernet cable before upgrading;
3. DO NOT upgrade firmware over internet, just finish it in LAN;
4. Keep power on during the upgrading;
5. Logging your camera as administrator first, upgrade firmware on web page.

**Operation 1:** Upgrade the transitional app firmware version.

**Step 1:** Login your camera, go to **Settings → System → System Upgrade**. Click **Browse** → choose **FI9805E\_app\_ver1.14.0.40\_OneToAll.bin** → click **Open** → Click **System Upgrade**.

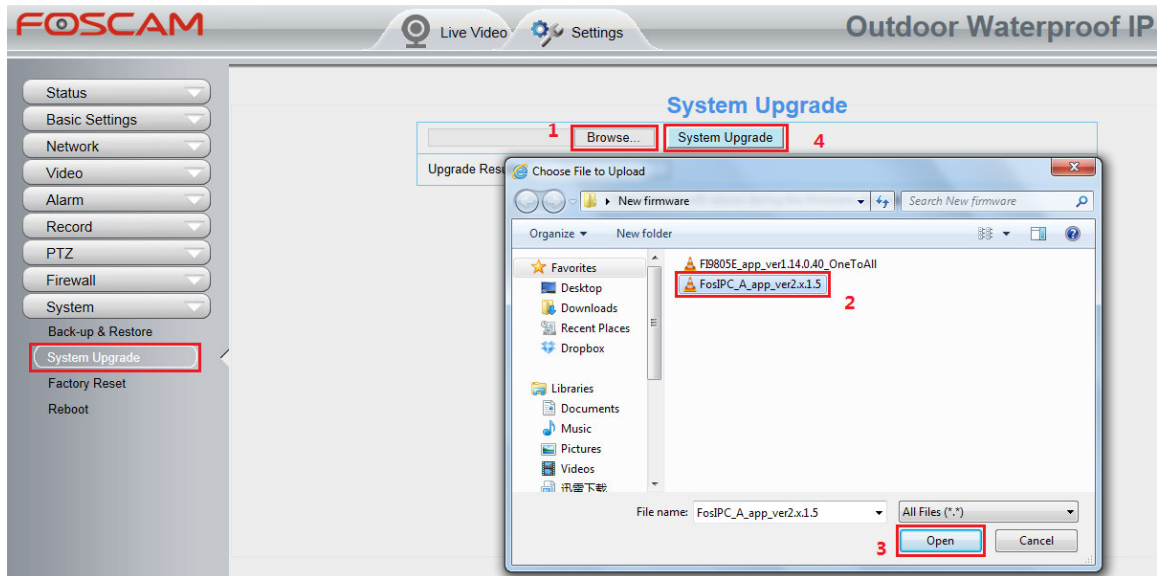


**Step 2:** “Upgrading, do not power off ... Xs” pop up, camera IP will disappear from the IP Camera Tool. Then camera will reboot itself, **DO NOT** power off the camera, please wait till the camera IP reappear in the IP Camera Tool.

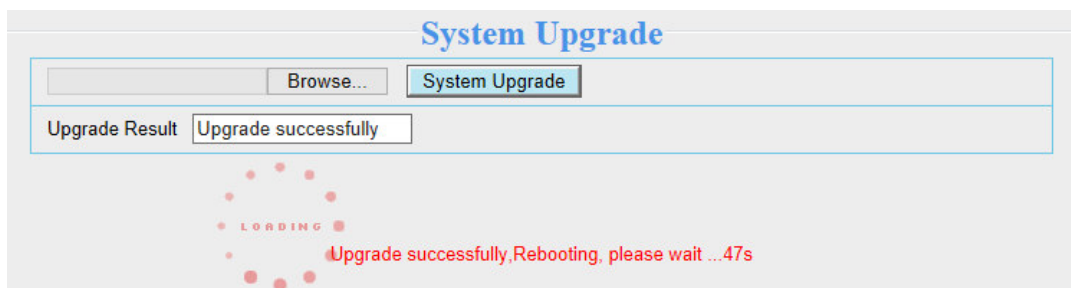
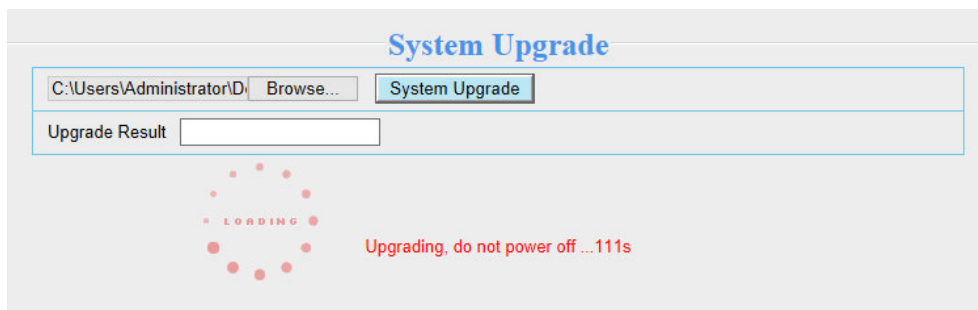


**Operation 2:** Upgrade the final app firmware version.

**Step 1:** Login again, go to **Settings** → **System** → **System Upgrade**. Click **Browse** → choose **FosiPC\_A\_app\_ver2.x.1.5.bin** → click **Open** → Click **System Upgrade**.

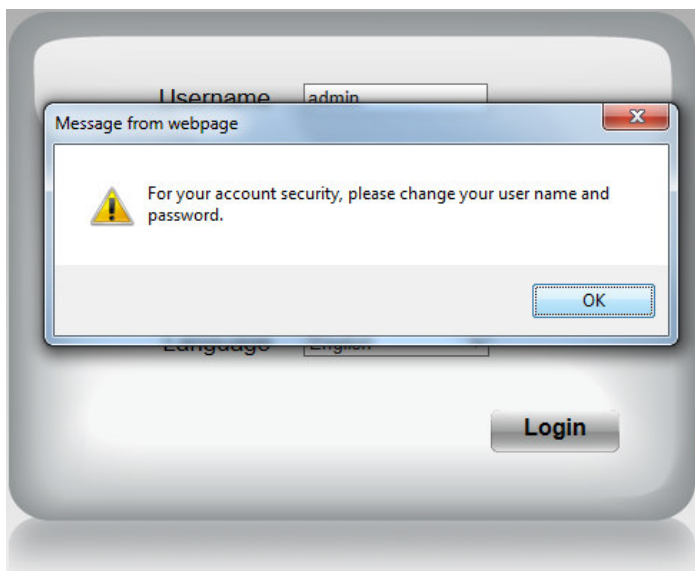


**Step 2: “Upgrading, do not power off ... Xs”** pop up, camera IP will disappear from the IP Camera Tool. **Then camera will reboot itself, DO NOT power off the camera, please wait till the camera IP reappear in the IP Camera Tool.**



**Operation 3:** Login again to check the **System Firmware Version, Application Firmware Version** and **Plug-In Version**.

*Note: Camera will ask you to revise the login account if your username is the default admin, no password.*



Device Information		Refresh
Camera Model	FI9805E	
Camera Name	FI9805E	
Camera ID	00626E47124B	
Camera Time	2013/11/12 15:12:19	
System Firmware Version	1.4.1.8	
Application Firmware Version	2.14.1.5	
Plug-In Version	2.0.2.10	

**Congratulations**, your camera successfully upgraded to the latest firmware!

**Note:**

1. You'd better re-install the plug-in, in case it did not upgraded.
2. The correct firmware version after upgrade:

System Firmware Version	1.4.1.8
Application Firmware Version	2.14.1.5
Plug-In Version	2.0.2.10